

INDUSTRIAL PRODUCTS LONG REACH



PIERCE

EXTEND YOUR
POSSIBILITIES.
REACH FOR IT!

LONG REACH



Pierce has a long history of supplying long reach fronts for hydraulic excavators. Our fronts are designed using the same sophisticated engineering software the OEM's use, built with mill-certified steel and manufactured using cutting-edge assembly methods right here in the U.S.A. All Pierce fronts meet or exceed tough OEM design standards and all come with ISO-rated performance data for your specific machine. And with warehouses and technical support located throughout North America, you're within quick reach of all you need to keep you working.

Pierce long reach fronts designed up to 52MT excavators have a proven track record for boosting production in applications such as dredging and deep foundation excavation, barge unloading, canal irrigation, and pond clean out.

And for larger machines, ask about Pierce super long reach fronts for deep trenching, mining and sand & gravel.

LONG REACH

PIERCE LONG REACH FRONTS.

FEATURES:

- Main boom and stick sections.
- Stick cylinder.
- Bucket cylinder and linkage compatible with many OEM buckets.
- All boom and stick plumbing.
- Centralized lubrication.

OPTIONAL:

- Complete the package with additional counterweight.
- A variety of buckets specifically designed for Pierce long reach fronts.

MACHINE	FRONT			DC BUCKET			GP BUCKET		
SIZE (IN MT)	FRONT	REACH	WEIGHT	CAPACITY	WIDTH	WEIGHT	CAPACITY	WIDTH	WEIGHT
17-19	LR2-44C	44'	8,250#	.759 YD3	60"	900#	.625 YD3	30"	975#
20-23	LR2-50C	50'	9,185#	.759 YD3	60"	900#	.625 YD3	30"	975#
24-26	LR3-50C	50'	10,970#	1.33 YD3	60"	1,350#	.75 YD3	36"	1,200#
	LR3-55C	55'	12,500#	1.125 YD3	60"	1,300#	.75 YD3	36"	1,200#
	LR2-60C	60'	11,450#	.759 YD3	60"	900#	.625 YD3	30"	975#
27-30	LR3-50C	50'	11,300#	1.5 YD3	60"	1,450#	1.0 YD3	36"	1,275#
	LR3-55C	55'	12,500#	1.33 YD3	60"	1,350#	1.0 YD3	36"	1,275#
	LR3.2-60C	60'	12,163#	1 YD3	60"	1,050#	.75 YD3	36"	1,000#
31-39	LR4-44C	44'	12,750#	2 YD3	64"	2,200#	1.5 YD3	42"	2,500#
	LR3-50C	50'	11,500#	1.75 YD3	60"	1,600#	1.25 YD3	36"	1,350#
	LR3-55C	55'	12,995#	1.5 YD3	60"	1,450#	1.0 YD3	36"	1,275#
	LR3-60C	60'	13,990#	1.33 YD3	60"	1,350#	1.0 YD3	36"	1,275#
	LR3-65C	65'	14,950#	1.125 YD3	60"	1,300#	.75 YD3	36"	1,200#
40-52	LR4-50C	50'	17,600#	2.75 YD3	64"	2,700#	2.5 YD3	54"	3,150#
	LR4-55C	55'	18,600#	2.5 YD3	64"	2,450#	2.25 YD3	54"	2,950#
	LR4-60C	60'	19,300#	2.28 YD3	64"	2,350#	2.0 YD3	48"	2,700#
	LR4-65C	65'	20,210#	1.75 YD3	64"	1,950#	1.5 YD3	42"	2,600#
	LR4-70C	70'	21,240#	1.125 YD3	60"	1,350#	1.0 YD3	36"	1,275#

NOTE: FRONT WEIGHTS DO NOT INCLUDE HOIST CYLINDERS OR BUCKETS.
 CUSTOM BUCKETS AND BUCKET SIZES ARE AVAILABLE UPON APPLICATION APPROVAL.
 PIERCE LONG REACH FRONTS UTILIZE OEM EXCAVATOR HOIST CYLINDERS. IF NEEDED, PIERCE CAN SUPPLY.
 ALL DITCH CLEANING BUCKETS COME EQUIPPED WITH BOLT-ON CUTTING EDGE.
 ALL GENERAL PURPOSE BUCKETS COME EQUIPPED WITH TEETH.

TRANSPORT CRADLE.



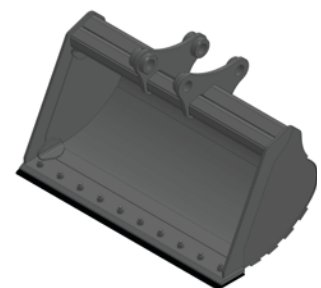
For overseas, containerized shipments.

NOT JUST ANOTHER BUCKET.

Specifically designed and optimized to work with Pierce long reach fronts, each bucket is fabricated exclusively with high-strength steel, resulting in a lightweight bucket that maximizes payload.



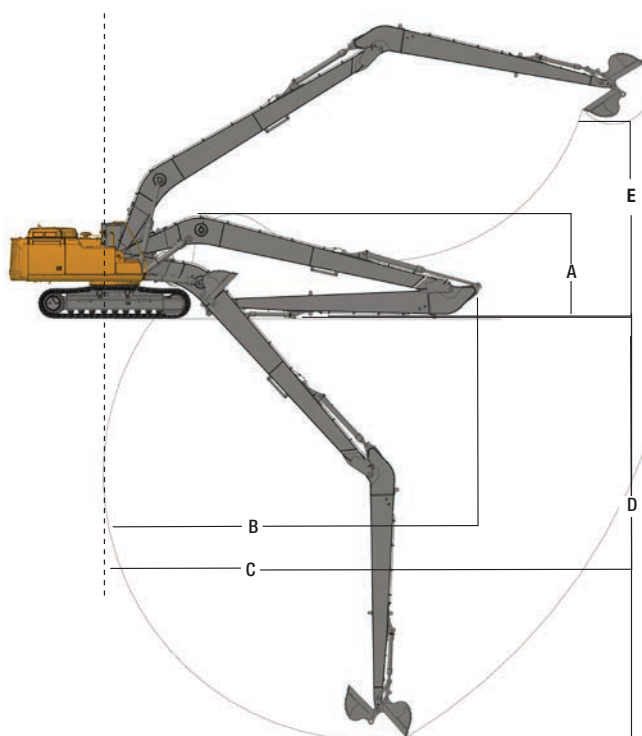
GENERAL PURPOSE



DITCH CLEANING



LONG REACH



MACHINE SIZE (IN MT)	FRONT	REACH	A	B	C	D	E
17-19	LR2-44C	44'	9'8"	28'	44'3"	33'	35'3"
20-23	LR2-50C	50'	10'3"	31'4"	50'	37'7"	40'1"
24-26	LR3-50C	50'	10'8"	32'2"	50'	37'7"	37'
	LR2-55C	55'	11'1"	35'	55'1"	42'3"	39'4"
	LR2-60C	60'	10'9"	39'8"	59'10"	48'6"	39'6"
27-30	LR3-50C	50'	10'8"	32'2"	50'	37'5"	37'2"
	LR3-55C	55'	11'1"	35'	55'1"	42'	39'7"
	LR3.2-60C	60'	11'3"	39'8"	60'4"	48'3"	41'
31-39	LR4-44C	44'	11'1"	27'9"	44'3"	33'6"	25'7"
	LR3-50C	50'	11'	32'2"	50'	37'1"	34'9"
	LR3-55C	55'	11'2"	35'10"	55'11"	44'	34'6"
	LR3-60C	60'	11'5"	39'7"	60'9"	47'9"	38'5"
	LR3-65C	65'	12'	42'	65'3"	51'9"	41'7"
40-52	LR4-50C	50'	12'4"	33'6"	51'	37'10"	31'2"
	LR4-55C	55'	12'6"	36'5"	55'6"	41'4"	33'3"
	LR4-60C	60'	12'6"	39'9"	61'5"	46'2"	38'5"
	LR4-65C	65'	12'8"	41'11"	66'	49'4"	42'6"
	LR4-70C	70'	12'8"	43'8"	70'5"	54'3"	44'8"

NOTE: SPECIFICATIONS MAY CHANGE DEPENDING UPON MACHINE MAKE AND MODEL.



PIERCE

In-house design team: check. Comprehensive manufacturing capabilities: check. Product testing and certification, technical support, and convenient distribution centers throughout North America: check, check, and check. With so much to offer, we're ideally positioned to provide complete solutions for all of your business needs. From ordinary to extraordinary.

As a leading designer and manufacturer of hydraulic excavator attachments and work tools, Pierce has built a solid reputation for providing reliable, high performance products that are designed to keep pace with changing industry conditions – and one step ahead of emerging technologies.

Our position as a direct supplier for many of the world's leading equipment providers has enabled us to become experts in client collaboration, managing specific application parameters, and maintaining the highest quality standards for a variety of markets. Even if your needs call for a customized solution that doesn't currently exist, you can count us to make it happen – and make it happen right. Imagine that.



Pierce Pacific Manufacturing, Inc.

4424 NE 158th
Portland, Oregon 97230 USA

Post Office Box 30509
Portland, Oregon 97294 USA

Telephone: 503.808.9110
Toll Free: 800.760.3270
Fax: 503.808.9111

Distribution Warehouse:
Jackson, Mississippi USA

www.piercepacific.com

