

INDUSTRIAL PRODUCTS CATALOG



PIERCE



PIERCE

Since 1931, the professionals at Pierce have been designing, engineering, manufacturing and supporting customized products that meet the demands of heavy industry and the equally demanding needs of our customers. With expertise in scrap, refuse, and bulk material handling, as well as in demolition, specialty excavation, and forestry, our product knowledge is vast, comprehensive, and always growing.

No matter how challenging or specific your needs, count on Pierce to deliver virtually anything you can possibly imagine.

SCRAP HANDLING	4
MATERIAL HANDLING	6
LONG REACH	8
SUPER LONG REACH	11
LONG STICKS	14
CAB RISERS	15
CONVERSIONS	17
STRADDLE CARRIER	18
RAIL FRONTS	19
UNDERGROUND MINING	20
DEMOLITION	22
PILE DRIVER	24
PEDESTAL BOOM SYSTEMS	25
FORESTRY	26
ORANGE PEEL GRAPPLES	28
GENERATOR SYSTEMS	30
CLAMSHELL BUCKETS	31
POWER ATTACHMENTS	33



SCRAP HANDLING

LIFTS SCRAP, PRODUCTIVITY, AND BOTTOM LINES ALIKE.

Pierce scrap handlers are designed for long reach loading, close-in unloading and sorting, and reaching tall piles in extreme above-grade environments.

Our versatile and extensive line of scrap handling solutions suit hydraulic excavators from 20-150MT.

2-PIECE FRONT

For heavy-duty mobile or fixed loading applications.

3-PIECE FRONT

For added articulation and dexterity.



FEATURES:

- 2-piece scrap handling front equipped with larger bore hoist cylinders, single or twin stick cylinders, droop nose stick and grapple plumbing with shut-off valves.
- Static or hydraulic elevating cab riser with cab guard and OSHA-spec platform, stairs and railings.
- Wide undercarriage for 360° stability.
- Heavy counterweight for additional stability.
- Rotate circuit for grapple operation and/or hydraulic drive generator and magnet package.

COMPLETE THE PACKAGE WITH PIERCE.

Pierce provides a complete scrap handling solution that is equal to or better than any scrap handler on the market today. And if our standard configurations don't suit your operation, Pierce can customize the machine to your exact application criteria.



MACHINE SIZE (IN MT)	20-23	24-26	27-30	31-39	40-52	60-75	80-90	120-150
2-PIECE FRONT	40'	42'	46'	50'	55'-60'	55'-60'	55'-70'	55'-70'
3-PIECE FRONT	CONTACT PIERCE			50'	55'	55'-60'	55'-70'	55'-70'
ATTACHMENTS								
ORANGE PEEL GRAPPLE (YD ³)	.75	1.0	1.25	1.5	1.5-2.0	2.5-3.0	3.0-4.0	5.0-7.0
MAGNET	40"	40"-48"	48"	57"	57"-66"	66"-72"	72"-87"	92"
GENERATOR PACKAGE (KW)	10	15	15	20	25	33	40	45

NOTE: SPECIAL FRONT LENGTHS AND CONFIGURATIONS ARE AVAILABLE UPON REQUEST.

Don't feel forced to buy a European brand. Especially when you can invest in a U.S. company to build your purpose-built scrap handler.

IMPROVE YOUR LONG-RANGE PRODUCTION GOALS.

Pierce material handlers are built to help you meet the tight scheduling demands of barge terminals, while maximizing your own production volume.

Whether you're working close-in, performing long reach loading and unloading, or need to reach tall hoppers in extreme above-grade environments, we'll help you handle the job with pinpoint accuracy, optimal efficiency, and greater operator safety.

2-PIECE FRONT

For heavy-duty mobile or fixed loading applications.

3-PIECE FRONT

For added articulation and dexterity.





FEATURES:

- 2-piece material handling front equipped with larger bore hoist cylinders, single or twin stick cylinders, droop nose stick and clamshell plumbing with shut-off valves.
- Static or hydraulic elevating cab riser with cab guard and OSHA-spec platform, stairs and railings.
- Wide undercarriage for 360° stability.
- Heavy counterweight for additional stability.
- Rotate circuit for clamshell operation.

COMPLETE THE PACKAGE WITH PIERCE.

Pierce provides a complete material handling solution that is equal to or better than any material handler on the market today. And if our standard configurations don't suit your operation, Pierce can customize the machine to your exact application criteria.

MACHINE SIZE (IN MT)	20-23	24-26	27-30	31-39	40-52	60-75	80-90	120-150
2-PIECE FRONT	40'	42'	46'	50'	55' -60'	55'-60'	55'-70'	55'-70'
3-PIECE FRONT	CONTACT PIERCE							
ATTACHMENTS								
CLAMSHELL BUCKETS	1YD3	1YD3	1.5YD3	2YD3	2.5-3YD3	3.5-4YD3	3-5YD3	4-7YD3

NOTE: SPECIAL FRONT LENGTHS AND CONFIGURATIONS ARE AVAILABLE UPON REQUEST.
* BASED ON ≤3,000#/YD3 MATERIAL.

Don't feel forced to buy a European brand. Especially when you can invest in a U.S. company to build your purpose-built material handler.



EXTEND YOUR
POSSIBILITIES.
REACH FOR IT!

LONG REACH



Pierce has a long history of supplying long reach fronts for hydraulic excavators. Our fronts are designed using the same sophisticated engineering software the OEM's use, built with mill-certified steel and manufactured using cutting-edge assembly methods right here in the U.S.A. All Pierce fronts meet or exceed tough OEM design standards and all come with ISO-rated performance data for your specific machine. And with warehouses and technical support located throughout North America, you're within quick reach of all you need to keep you working.

Pierce long reach fronts designed up to 52MT excavators have a proven track record for boosting production in applications such as dredging and deep foundation excavation, barge unloading, canal irrigation, and pond clean out.

And for larger machines, ask about Pierce super long reach fronts for deep trenching, mining and sand & gravel.

PIERCE LONG REACH FRONTS.

FEATURES:

- Main boom and stick sections.
- Stick cylinder.
- Bucket cylinder and linkage compatible with many OEM buckets.
- All boom and stick plumbing.
- Centralized lubrication.

OPTIONAL:

- Complete the package with additional counterweight.
- A variety of buckets specifically designed for Pierce long reach fronts.

MACHINE	FRONT			DC BUCKET			GP BUCKET		
SIZE (IN MT)	FRONT	REACH	WEIGHT	CAPACITY	WIDTH	WEIGHT	CAPACITY	WIDTH	WEIGHT
17-19	LR2-44C	44'	8,250#	.759 YD3	60"	900#	.625 YD3	30"	975#
20-23	LR2-50C	50'	9,185#	.759 YD3	60"	900#	.625 YD3	30"	975#
24-26	LR3-50C	50'	10,970#	1.33 YD3	60"	1,350#	.75 YD3	36"	1,200#
	LR3-55C	55'	12,500#	1.125 YD3	60"	1,300#	.75 YD3	36"	1,200#
	LR2-60C	60'	11,450#	.759 YD3	60"	900#	.625 YD3	30"	975#
27-30	LR3-50C	50'	11,300#	1.5 YD3	60"	1,450#	1.0 YD3	36"	1,275#
	LR3-55C	55'	12,500#	1.33 YD3	60"	1,350#	1.0 YD3	36"	1,275#
	LR3.2-60C	60'	12,163#	1 YD3	60"	1,050#	.75 YD3	36"	1,000#
31-39	LR4-44C	44'	12,750#	2 YD3	64"	2,200#	1.5 YD3	42"	2,500#
	LR3-50C	50'	11,500#	1.75 YD3	60"	1,600#	1.25 YD3	36"	1,350#
	LR3-55C	55'	12,995#	1.5 YD3	60"	1,450#	1.0 YD3	36"	1,275#
	LR3-60C	60'	13,990#	1.33 YD3	60"	1,350#	1.0 YD3	36"	1,275#
	LR3-65C	65'	14,950#	1.125 YD3	60"	1,300#	.75 YD3	36"	1,200#
40-52	LR4-50C	50'	17,600#	2.75 YD3	64"	2,700#	2.5 YD3	54"	3,150#
	LR4-55C	55'	18,600#	2.5 YD3	64"	2,450#	2.25 YD3	54"	2,950#
	LR4-60C	60'	19,300#	2.28 YD3	64"	2,350#	2.0 YD3	48"	2,700#
	LR4-65C	65'	20,210#	1.75 YD3	64"	1,950#	1.5 YD3	42"	2,600#
	LR4-70C	70'	21,240#	1.125 YD3	60"	1,350#	1.0 YD3	36"	1,275#

NOTE: FRONT WEIGHTS DO NOT INCLUDE HOIST CYLINDERS OR BUCKETS.

CUSTOM BUCKETS AND BUCKET SIZES ARE AVAILABLE UPON APPLICATION APPROVAL.

PIERCE LONG REACH FRONTS UTILIZE OEM EXCAVATOR HOIST CYLINDERS. IF NEEDED, PIERCE CAN SUPPLY.

ALL DITCH CLEANING BUCKETS COME EQUIPPED WITH BOLT-ON CUTTING EDGE.

ALL GENERAL PURPOSE BUCKETS COME EQUIPPED WITH TEETH.

TRANSPORT CRADLE.



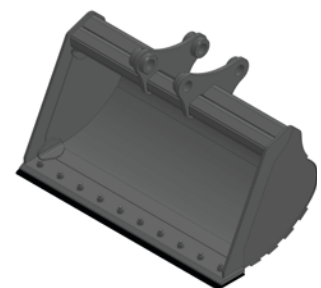
For overseas, containerized shipments.

NOT JUST ANOTHER BUCKET.

Specifically designed and optimized to work with Pierce long reach fronts, each bucket is fabricated exclusively with high-strength steel, resulting in a lightweight bucket that maximizes payload.



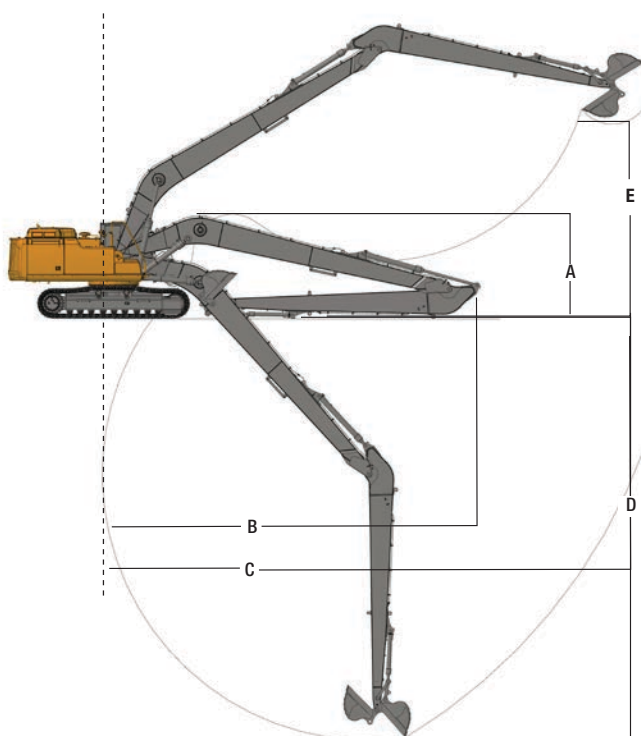
GENERAL PURPOSE



DITCH CLEANING



LONG REACH



MACHINE SIZE (IN MT)	FRONT	REACH	A	B	C	D	E
17-19	LR2-44C	44'	9'8"	28'	44'3"	33'	35'3"
20-23	LR2-50C	50'	10'3"	31'4"	50'	37'7"	40'1"
24-26	LR3-50C	50'	10'8"	32'2"	50'	37'7"	37'
	LR2-55C	55'	11'1"	35'	55'1"	42'3"	39'4"
	LR2-60C	60'	10'9"	39'8"	59'10"	48'6"	39'6"
27-30	LR3-50C	50'	10'8"	32'2"	50'	37'5"	37'2"
	LR3-55C	55'	11'1"	35'	55'1"	42'	39'7"
	LR3.2-60C	60'	11'3"	39'8"	60'4"	48'3"	41'
31-39	LR4-44C	44'	11'1"	27'9"	44'3"	33'6"	25'7"
	LR3-50C	50'	11'	32'2"	50'	37'1"	34'9"
	LR3-55C	55'	11'2"	35'10"	55'11"	44'	34'6"
	LR3-60C	60'	11'5"	39'7"	60'9"	47'9"	38'5"
	LR3-65C	65'	12'	42'	65'3"	51'9"	41'7"
40-52	LR4-50C	50'	12'4"	33'6"	51'	37'10"	31'2"
	LR4-55C	55'	12'6"	36'5"	55'6"	41'4"	33'3"
	LR4-60C	60'	12'6"	39'9"	61'5"	46'2"	38'5"
	LR4-65C	65'	12'8"	41'11"	66'	49'4"	42'6"
	LR4-70C	70'	12'8"	43'8"	70'5"	54'3"	44'8"

NOTE: SPECIFICATIONS MAY CHANGE DEPENDING UPON MACHINE MAKE AND MODEL.

SUPER-SIZE YOUR CAPABILITIES WITH SUPER LONG REACH FRONTS.

Dig deeper and reach farther with Pierce super long reach fronts. Specially designed for deep trenching, mining and dredging, our super long reach fronts work with the equipment you already have, including excavators ranging from 65MT up to 150MT.

SUPER LONG REACH



SUPER LONG REACH



DEEP TRENCHING/SLURRY WALL

MACHINE SIZE (IN MT)	FRONT	OVERALL LENGTH	DEPTH
60-75	LR6-60	60'	44'
	LR6-65	65'	48'
	LR6-70	70'	52'
	LR6-75	75'	56'
80-90	LR8-60	60'	44'
	LR8-65	65'	48'
	LR8-70	70'	52'
	LR8-75	75'	56'
120-150	LR8-80	80'	60'
	LR8-85	85'	65'
	LR11-80	80'	62'
	LR11-90	90'	71'
	LR11-100	100'	81'
	LR11-105	105'	86'

MINING/DREDGING

MACHINE SIZE (IN MT)	FRONT	OVERALL LENGTH	BUCKET CAPACITY (YD3)
60-75	LR6-60	60'	2.5-3.0
	LR6-65	65'	2.0-2.5
	LR6-70	70'	1.5-2.0
	LR6-75	75'	1.5
80-90	LR8-60	60'	3.25-3.5
	LR8-65	65'	2.75-3.0
	LR8-70	70'	2.75-3.0
	LR8-75	75'	2.5-2.75
120-150	LR8-80	80'	2.5
	LR11-60	60'	4.0-4.5
	LR11-70	70'	3.5-4.0
	LR11-80	80'	3.0-3.5
	LR11-90	90'	2.5-3.0

TAKE YOUR OPERATION TO THE NEXT LEVEL.

SUPER LONG REACH

INCLUDED:

- Main boom and stick sections.
- Stick cylinder.
- Bucket cylinder and linkage compatible with many OEM buckets.
- All boom and stick plumbing.
- Centralized lubrication.

OPTIONAL:

- High pressure filter system.
- Oversized hoist cylinders.
- Additional counterweight.
- A variety of buckets specifically designed for Pierce super long reach fronts.

HIGH PRESSURE FILTER SYSTEM



Our non-bypass filter system provides superior contaminant defense for all return oil flow, protecting the machine's hydraulic system.

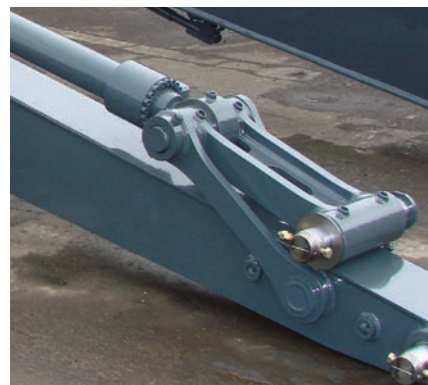
Cab mounted LED indicator alerts the operator of plugged filter.

TRENCHING BUCKETS



Ripper buckets for aggressive trenching.

OPTIONAL LINKAGE



For under water applications, our floating pin linkage extends stick-to-bucket joint life, as well as greatly reduces costly rebuilds.

WORK HARD AND CARRY A BIG STICK.

Pierce long sticks go to great lengths to improve your productivity without the need to invest in a complete long reach or material handling front. They're built to extend the reach of your excavator by up to 50% – allowing you to stretch your capabilities, easily and economically.

Our long sticks are designed to precision fit your excavator's main boom stick cylinder, bucket cylinder, linkage, pins, and factory main boom plumbing.


It's what sets Pierce attachments apart from pin-on stick extensions or stick modifications which are suited for light duty, incidental work.

FEATURES:

- Bare stick.
- Bushings in bores.
- Stick plumbing.
- Finish paint.

OPTIONAL:

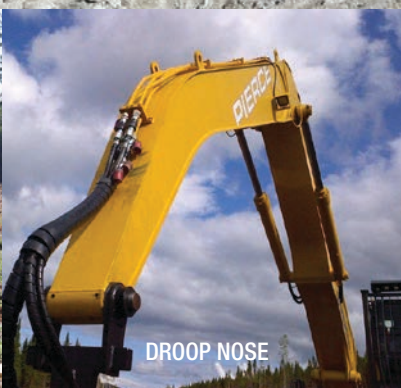
- Bucket cylinder and linkage.
- Work tools.



MACHINE SIZE (IN MT)	STICK LENGTH
17-19	12'-18'
20-23	12'-20'
24-26	12'-20'
27-30	14'-22'
31-39	14'-28'
40-52	14'-28'
60-75	18'-28'
80-90	18'-39'
120-150	18'-39'



FORESTRY BNT



DROOP NOSE



STRAIGHT NOSE



EXCAVATOR

RISE TO ANY OCCASION.

Whether you're looking for manual or hydraulic functionality, customized cab guard, various riser heights, or a configuration to meet a specific eye level or sight line, our experienced team is at your service. From fixed risers and hydraulic elevating cabs to operator cab guards that enhance safety, we're ready to provide whatever your job demands.

Our 48" and taller risers are suited to enclose Pierce generator packages for magnet operation.

For additional access and egress safety, select our optional platform, stairs and railings.

CAB RISERS



CAB RISER (Available configurations)	9"	24"	36"	48"	60"	72"	84"	120"
HYDRAULIC ELEVATING CAB							X	X
FIXED MANUAL TILT	X	X	X	X	X	X	X	X
FIXED HYDRAULIC TILT (FOR TRANSPORT)	X	X	X	X	X	X	X	X
UP AND OUT					X	X	X	
PLATFORM, STAIRS & RAILING					X	X	X	X
HALF GUARD	X	X	X	X	X	X	X	X
FULL GUARD	X	X	X	X	X	X	X	X
FRONT SCREEN	X	X	X	X	X	X	X	X



60" FIXED

60" UP-AND-OUT FIXED

120" FIXED

48" FIXED



HYDRAULIC ELEVATING CAB

Reach new heights of productivity with our 7' hydraulic elevating cab riser.

FEATURES:

- Elevate (0'-7').
- Operated by dedicated switch from inside cab.
- Hydraulic system cushions to avoid abrupt stops.
- Manual emergency cab-lowering controls mounted in cab and service bay (in the event of a power loss).
- Full cab guard.

ALSO AVAILABLE:

- Elevate (10')
- Elevate (0'-7') and tilt (35°).
- Tilt Only: 35°.

CAB GUARD

Protect your cab and operator from heavy impact.

OPTIONAL:

- Hinged front screen protects windshield and operator from flying debris.
- High intensity LED work lights.



CAB GUARD WITH
FRONT SCREEN



CAB GUARD



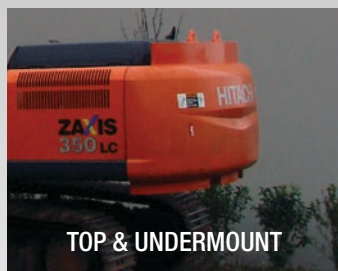
ELEVATE



ELEVATE AND TILT



BACKPACK



TOP & UNDERMOUNT



SANDWICH



UNDERMOUNT

COUNTERWEIGHT

Our heavy counterweights provide exceptional stability, particularly when working over the side of the machine. Purpose-built to also reduce loading on the swing bearing, this option is ideal for the rigors of heavy long reach, demolition, scrap, and material handling applications.

Available configurations:

- Top mount
- Undermount
- Top & undermount
- Sandwich
- Backpack

Pierce collaborates closely with the excavator OEM in order to provide the appropriate and approved counterweight amount for each machine.

WIDENED UNDERCARRIAGE

Pierce's widened carbody provides the over-the-side stability you need to handle heavy loads. It's engineered to stabilize your excavator while equalizing lift capacity throughout the entire 360° swing motion.

FIXED UNDERCARRIAGE



VARIABLE GAUGE UNDERCARRIAGE



TURNTABLE LEVELER

The unique design of Pierce's turntable levelers offer 8.5° articulation in both directions (left/right) for optimum flexibility on side slopes. Available for machines ranging from 17-23 metric tons.

OPTIONAL:

- Foot pedal or joystick control.



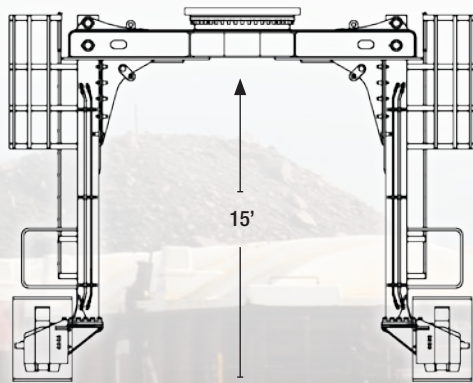
RISER RINGS

- Available 1'-4'.
- Additional working height for high-sided barges.
- Additional ground clearance.
- Improved operator sightlines.

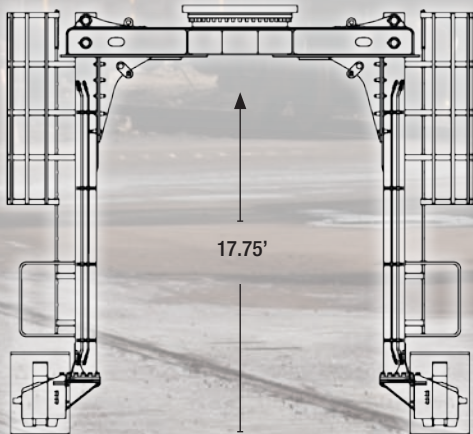
WORK IN A MORE STABLE ENVIRONMENT WITH PIERCE STRADDLE CARRIERS.

Raising the carbody allows the excavator to literally unload by straddling railcars. The result... radical productivity gains over traditional side loading equipment, 3 times more! This is due to optimizing operator visibility and safety while minimizing damage to railcars. Furthermore, the cost is less than other railcar dump systems, and implementation is a snap.

See how simple it is to elevate your game — and your productivity.



STANDARD RAILCAR CLEARANCE



HI-TOP/LOCOMOTIVE CLEARANCE

STRADDLE CARRIER





PIERCE RAIL FRONT FOR UNDERCUTTING AND CLEANUP.

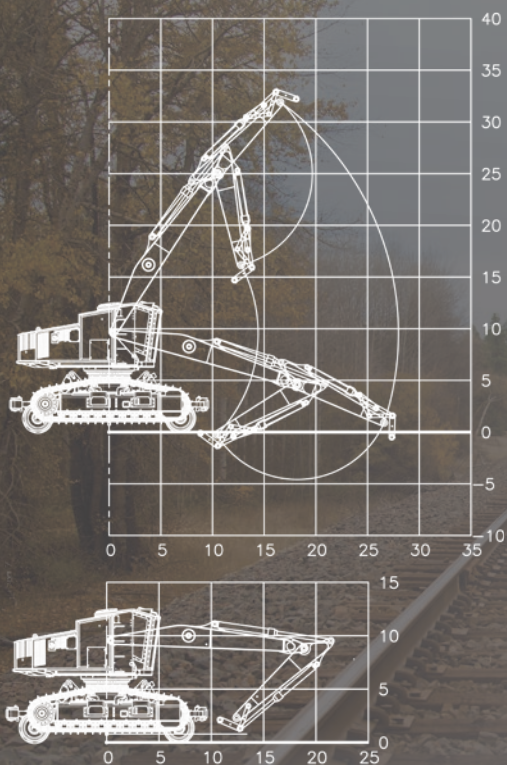
CUSTOM RAIL CONFIGURATIONS

FEATURES:

- 28' overall reach.
- 2-piece front with excavator-style stick.
- Stick cylinder.
- Bucket cylinder and linkage.
- High strength materials.
- Light brackets on main boom.
- Oversized pins and aluminum bronze bushings.
- Plumbed for undercutter and brushcutter.
- Centralized lubrication.

OPTIONAL:

- Hoist cylinders.
- LED light package.



UNDERGROUND MINING

TOUGH TOOLS FOR A TOUGH JOB.

Underground mining is a job that redefines harsh. Which is why you need a tool that redefines tough.

Unlike standard OEM equipment, Pierce scaling fronts are purpose-built to withstand the rigors of underground mining. And because no two mines are the same, each front is engineered and configured to fit your specific application and environment. All while ensuring a safer work area for those inside and outside the machine.

Since Pierce fronts are uniquely designed for underground mining, you can expect them to stand up much better to wear and tear. Which means reduced maintenance costs and greater longevity compared to standard factory digging booms.



PURPOSE-BUILT SCALING FRONTS

FEATURES:

- Extreme duty main boom and stick sections.
- Straight main boom and excavator style stick.
- Single or twin stick cylinders.
- “Captured” main-to-stick pin.
- Collar-style pin keepers.
- Side-mounted plumbing with guards.
- High-pressure quick disconnects.
- Hydraulic plumbing (O-ring face seal).
- Top or bottom-mount bucket cylinder and linkage.
- Heavy-duty bucket cylinder guard.
- Debris deflector.
- Guarded light brackets.

OPTIONAL:

- Telescopic stick.
- Plumbing for water nozzle.
- High intensity LED work lights.
- Heavy-duty cab protection.
- Hydraulic tilt cab (35°).
- Dust suppression system.



READY TO REPORT FOR EXTREME DUTY.

Pierce scaling fronts go where most loaders and excavators fear to tread. Now you can efficiently remove loose and fractured rock from mine walls, backs, and faces, while giving your operator greater control. That adds up to a safer workplace, plus a higher quality vault. Our scaling booms also come equipped with essential guarding to protect operator and machine alike.

This rugged equipment is purpose-built for extreme-duty. The straight main boom optimizes the working range, allowing operators to get to hard-to-reach spots. And options such as a telescopic stick, hydraulic tilting cab, and dust suppression system allow you to configure a scaling machine that suits both your application and your operating staff.



WATER TANK



TILT CAB AND CAB GUARD



DEMOLITION

HIGH REACH DEMOLITION.

BUILT TO DESTROY.

Pierce demolition packages are specially built for every type of deconstruction. Whether you're tearing down a building, picking apart ground level debris, or severing rebar, our hardworking machines go to great lengths to help you tackle the toughest demolition applications, safely and effectively.

MEET THE EXTENDED FAMILY.

MACHINE SIZE (IN MT)	24-30	31-39	40-52	60-75	80-90	120-150
MAX WORKING HEIGHT (LEVEL TOOL)	50'	65'	80'-90'	100'	105'-120'	150'-175'
WORK TOOL SIZE	GRAPPLE/BUCKET	4,500#	4,500#-6,500#	4,500#-7,500#	4,500#-10,500#	4,500#-10,500#

CONTROL YOUR BOOM WITH BAMS

Our exclusive Boom Angle Monitoring System (BAMS) keeps your boom within a preset working range by controlling the operating mode and pump flow. When the tool reaches the maximum safe range, BAMS automatically interrupts pilot flow, allowing the operator to move the boom back into the safe working range.

OBSERVATION MONITORING SYSTEM

Camera system(s) mounted on stick. Boosts productivity with improved visibility during high reach operation.

TRANSPORT CRADLE

Transport cradles are available for high reach and excavator configurations.

MULTI-FUNCTION CONTROL SYSTEM

For the most precise control, our system utilizes electro-hydraulic proportional function to control boom sections and work tools.

Easily adjust pressure and flow for each implement. Simply toggle to 'Shear', 'Hammer', 'Universal Processor', or 'Bucket' to automatically adjust hydraulic requirements through cab-mounted controller.

DUST SUPPRESSION

Easy connection to water supply. Optional 200+ gallon stainless steel water tank with overflow port, water height gauge and water filter. Stainless plumbing from boom foot to stick-tip. Includes line drains, replaceable nozzles and connections. Operator-controlled activation from inside cab.

TEAR IT DOWN. PICK IT APART.

INTERMEDIATE DEMOLITION FRONTS

Our two-piece, intermediate height demolition fronts are ideal for moderate teardowns and demolition, such as sorting, processing, and loading. A rugged straight main boom and a heavy-duty excavator-style stick give you the power to tackle mid-level teardowns easily and efficiently.

Works with a variety of attachments:

- Hammer
- Shear
- Universal processor
- Pulverizers
- Severe duty grapples

MACHINE ARMOR

- HD underhouse guards.
- Integral catwalks.
- HD pump and radiator doors.
- HD right-hand corner guard.
- High lift boom adapter.
- Cylinder guards.
- Rock guards.
- Swivel guard.
- Idler reinforcement.
- HD top roller brackets.
- HD travel motor covers.
- Expandable undercarriage.
- Additional counterweight.
- Safety railings.
- High intensity LED work lights.



HYDRAULIC ELEVATING AND TILTING CAB

CAB FEATURES:

- Elevate (0'-7') and tilt (35°).
- Operated by dedicated joystick from inside cab.

ALSO AVAILABLE:

- Tilt Only: 35°.



L.E.X. DEMOLITION FRONTS

Our rugged L.E.X. first member main boom is designed for ground-level site remediation, sorting, loading, processing, and finishing demolition site work. It is configured with a top-mount stick cylinder designed to work with a heavy-duty shear.

The shear can be detached so that a second member stick can be added to allow for alternate applications and flexibility.

PILE DRIVER

Say goodbye to cable cranes...along with the transportation expense, set-up, and teardown time. Introducing Pierce pile driving fronts.

Our 2-piece, 3-piece, and 3-piece telescopic units are engineered to tuck to an allowable transport height, and on a single truck. Furthermore, the 3-piece variations allow the operator to drive piles without having to track the machine.

Pierce pile driving fronts are designed to reduce transportation and set-up costs, save valuable time, and increase your productivity.



A NEW PILE DRIVER YOU CAN DIG.

ROCK SOLID AND CRUSHINGLY EFFECTIVE.

Pierce's pedestal boom system is designed to keep you breaking rock without a break. You can count on our purpose-built, hydraulically powered boom system to keep your job site on schedule — and on budget.

Our excavator-style boom with bucket linkage features sturdy welded box-beam construction, easy accessibility for service, plus safe, operator-friendly amenities and controls. What's more, our systems make it easy to transfer, sort, and compact material all with one efficiently designed unit.

One stand out feature that differentiates our booms from others is that they are not made of simple light-duty, rectangular tubing. Rather, our booms use the same design technology as our heavy-duty industrial fronts to ensure they are built to withstand the rigors of rock-breaking applications.

FEATURES:

- Welded box-beam construction utilizing high strength materials.
- Heavy-duty swing bearing tower.
- High-pressure cylinders.
- Oversized pins and aluminum bronze bushings.
- 180° swing.
- Hydraulic plumbing.
- Centralized lubrication.
- 1,800 RPM c-face TEFC electric motor.

HYDRAULIC SYSTEM:

- Enclosure: hydraulic tank with cleanout, drain, and sight gauge.
- Variable piston pump pressure compensating, load sensing with pilot circuit gear pump.
- Return filter with bypass and gauge indicator.
- Reservoir temperature sensor with PLC logic for shutdown.
- 24V DC oil cooler.
- 120V AC tank heater equipped with thermostat.
- (2) Suregrip joysticks with Pierce logic control.
- 50' cable, 25' pressure hose.

OPTIONAL:

- Wireless control.
- High-pressure filter with bypass and gauge indicator.
- Operator's cab.
- Pedestal column.

MODEL	75 HP REACH	RECOMMENDED BREAKER WEIGHT
PHPB2016HD	16'	2,250#
PHPB2018HD	18'	2,250#
PHPB2020HD	20'	1,850#
PHPB2022HD	22'	1,850#
PHPB2025HD	25'	1,400#
PHPB2028HD	28'	1,400#

MODEL	100 HP REACH	RECOMMENDED BREAKER WEIGHT
PHPB2516HD	16'	4,300#
PHPB2518HD	18'	4,300#
PHPB2520HD	20'	3,350#
PHPB2525HD	25'	3,000#
PHPB2530HD	30'	2,650#

PEDESTAL BOOM SYSTEMS

WE SEE THE FOREST FROM THE TREES. IT'S CLEAR-CUT.

Pierce offers a complete forestry attachment product line to serve every need, including: cutting and felling, shovel logging, hoe chucking, processing and loading, mill yard sorting and high decking. From large clear-cut stands to second growth thinning and tall log decks count on Pierce for the forestry solution that's just right for the job.

PIERCE FORESTRY PRODUCTS:

- Forestry fronts
- Forestry grapples
- Complete logging and mill yard conversions
- Stroke delimiters
- Grapple Processor
- Power attachments
- Felling attachments
- Paralift/Hi-Lift

For complete detail on
Pierce forestry products, refer to
our forestry catalog.



ORANGE PEEL GRAPPLES

Heavy-duty scrap handling meets its match with Pierce orange peel grapples. Long-wearing grapple tips complement the extreme duty main frame and AR400 steel grapple tines. Together, they deliver a tough-as-nails scrap grapple. Combine that with heavy-duty component guarding and high-pressure cylinders for greater closing power, and you have a work tool designed for high duty cycles and extreme applications.



MAXIMIZE UPTIME AND PRODUCTION

FEATURES:

- Powered 360° continuous rotation.
- Heavy-duty bearing and rotate motor.
- Oversized pins and aluminum bronze bushings.
- Completely protected hydraulics.
- High-pressure cylinders.
- Convenient access to all serviceable locations.
- Grapple-to-link pin.
- Optimum arm shape to maximize payload.
- Hardened grapple tips.
- 2yd³ (and smaller) grapples designed to optimally fit into and unload dump trailers.

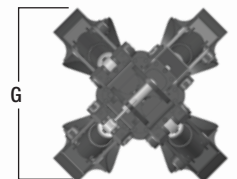
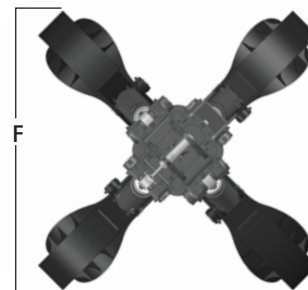
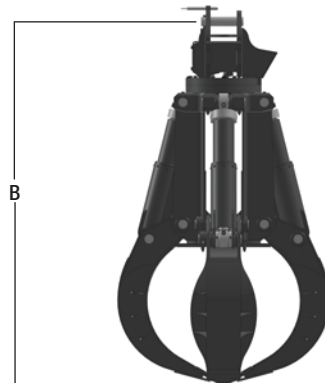
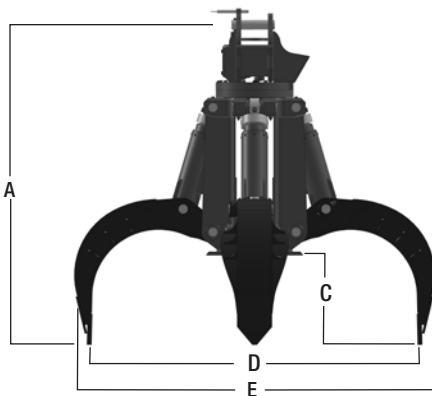


OPTIONAL:

- Y - links.
- Knock-about and non-rotating.

ORANGE PEEL GRAPPLE SPECIFICATIONS

SIZE	MODEL	A	B	C	D	E	F	G	WEIGHT
.75 YD ³	OP75	85"	98"	25"	86"	95"	74"	47"	3,700#
1.0 YD ³	OP100	89"	101"	31"	91"	103"	79"	49"	3,900#
1.25 YD ³	OP125	89"	103"	31"	96"	107"	82"	42"	4,150#
1.5 YD ³	OP150	88"	104.8"	30"	101"	112"	86"	55"	4,450#
2.0 YD ³	OP200	94"	113"	36"	112"	122"	92"	58"	4,800#
2.5 YD ³	OP250	96"	118"	39"	121"	134"	100"	64"	5,600#
3.0 YD ³	OP300	104"	126"	43"	129"	143"	108"	72"	6,500#



GENERATOR SYSTEMS

FEATURES:

- Baldor generator directly coupled to hydraulic motor.
- Solid state E-MAG Controller.
- Cab-mounted volt-meter magnet "on/off" indicator.
- Magnet cable and connectors, brackets, and mounts (as required).
- Cab-mounted on/off system control.
- Control handles.

INSTALLATION LOCATIONS:

- Right front corner.
- Within Pierce 48"-120" fixed cab risers.

MACHINE SIZE (IN MT)	GENERATOR PACKAGE	MAGNET DIAMETER	MAGNET WEIGHT
20-23	10KW	40"	1,800#
24-26	15KW	40"-48"	1,800#-2,900#
27-30	15KW	48"	2,900#
31-39	20KW	57"	4,400#
40-52	25KW	57"-66"	4,400#-6,400#
60-75	33KW	66"-72"	6,400#-8,300#
80-90	40KW	72"-87"	8,300#-12,500#
120-150	45KW	92"	15,400#

ALL MAGNETS REQUIRE MAGNET LINK.
FOR GENERATOR PACKAGE INSTALLATION, MACHINE MUST BE EQUIPPED WITH APPROPRIATE
AUXILIARY PUMP DRIVE OR PRIORITY VALVE.

MAGNET CONNECTING OPTIONS.



FIXED MAGNET LINK




GRAPPLE POST



DANGLING MAGNET LINK

GENERATOR SYSTEMS



CLAMSHELL BUCKETS

GRAB THE
BULK
OF THE JOB.

IT'S ALL
IN A DAY'S
WORK.

Loading and handling bulk material is gritty, rigorous work that can put a world of hurt on your equipment. Pierce clamshell buckets have the muscle you need to power through all of it... safely, reliably and profitably.



HERE'S THE SCOOP ON OUR CLAMSHELL BUCKETS.

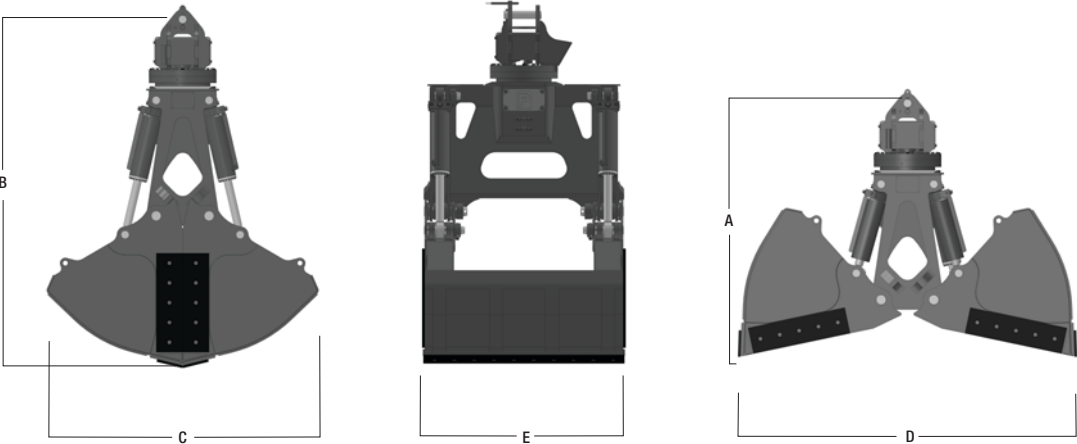
- FEATURES:
- High-strength materials reduce unnecessary weight.
 - A514 steel main frame.
 - Powered 360° continuous rotation.
 - Wear-resistant bucket surfaces with cutting edges.
 - Heavy-duty bearing and rotate motor.
 - Oversized pins and aluminum bronze bushings.
 - Completely protected hydraulics.
 - (4) high pressure cylinders.
 - Clamshell-to-link pin.

- OPTIONAL:
- Y - links.
 - Knock-about and non-rotating.

CLAMSHELL BUCKET SPECIFICATIONS

MODEL	CAPACITY	A	B	C	D	E	WEIGHT
QC200	2.0 YD3	76"	101"	75"	95"	62"	5,325#
QC250	2.5 YD3	77"	106"	82"	103"	62"	5,750#
QC300	3.0 YD3	78"	110"	90"	111"	62"	6,090#
QC350	3.5 YD3	83"	114"	89"	108"	74"	6,900#
QC400	4.0 YD3	84"	118"	94"	115"	74"	7,350#
QC450	4.5 YD3	85"	120"	99"	120"	74"	7,800#
QC500	5.0 YD3	84"	119"	95"	117"	86"	9,100#
QC550	5.5 YD3	85"	122"	101"	122"	86"	9,600#
QC600	6.0 YD3	86"	124"	105"	127"	86"	10,100#
QC700	7.0 YD3	97"	130"	106"	128"	100"	11,500#
QC800	8.0 YD3	98"	134"	112"	136"	100"	13,000#
QC900	9.0 YD3	102"	137"	111"	135"	114"	14,200#
QC1000	10.0 YD3	102"	140"	116"	141"	114"	15,100#
QC1100	11.0 YD3	103"	143"	121"	147"	114"	16,000#

BUCKETS SUITED FOR LIGHTWEIGHT MATERIAL (LESS THAN 1,800# YD3) AVAILABLE UPON REQUEST.
BUCKETS IN HEAVY-DUTY DIGGING CONFIGURATION AVAILABLE UPON REQUEST.



PIERCE ATTACHMENTS: POWER ON!

Pierce power attachments are specifically made to stand up to the rigors of heavy construction, forestry, demolition, and extreme climate and work conditions. They're also perfect for ground level demolition, road building, and heavy-duty excavation.



FEATURES:

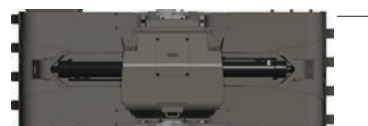
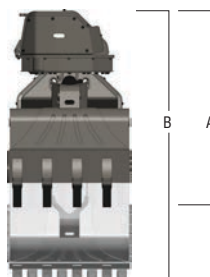
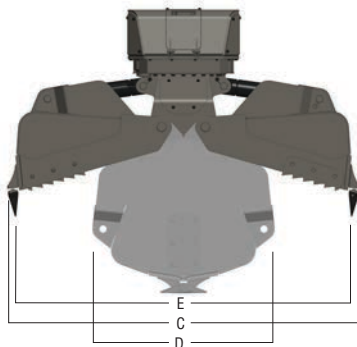
- High strength materials reduce unnecessary weight.
- Wear resistant bucket surfaces.
- Common upper structure.
- Lugging interfaces to any excavator.
- Completely protected hydraulics.
- Bolt-on, replaceable, serrated side edges.
- Replaceable bucket teeth.
- Heavy-duty bearing and rotate motor.
- Single rotate drive.
- Oversized pins and aluminum bronze bushings
- Powered 360° continuous rotation.
- Heavy-duty, high pressure hydraulic swivel.
- High pressure cylinders.
- Rotational float.

OPTIONAL:

- Dual-drive rotate motors.
- Tool cylinder anchor.
- Installation control kit.
- Alternate arm configurations.
- Valve-in-head configuration.
- Open/close/rotate proportional control.

POWER ATTACHMENT SIZES (CLAMSHELL BUCKET SHOWN)

MODEL CAPACITY	PPA-25 .5 YD ³	PPA-27 .75 - 1.0 YD ³	PPA-30 1.25 - 1.5 YD ³
MACHINE SIZE IN (MT)	20-26	27-39	31-52
WEIGHT (SINGLE DRIVE, NO LUGGING)	3,600#	4,700#	5,600#
A: HEIGHT (OPEN)	62"	66"	70"
B: HEIGHT (CLOSED)	77"	86"	96"
C: OVERALL WIDTH (OPEN)	87"	103"	120"
D: OVERALL WIDTH (CLOSED)	51"	54"	62"
E: MAXIMUM OPENING	81"	96"	114"
F: DEPTH	35"	37"	43"
NOTE: SPECIFICATIONS AND MEASUREMENTS WILL VARY DEPENDING ON CONFIGURATION. MEASUREMENTS ABOVE REFLECT CLAMSHELL BUCKET CONFIGURATION.			
ROTATE GEAR/BEARING DIAMETER	25"	27"	30"
MAIN BEARING RATING	120,000 LBS @ 0 FT. LBS 40,000 LBS @ 52,000 FT. LBS.	120,000 LBS @ 0 FT. LBS 40,000 LBS @ 52,000 FT. LBS.	160,000 LBS @ 0 FT. LBS 50,000 LBS @ 70,000 FT. LBS.
ROTATION	360°	360°	360°
STANDARD DRIVE	SINGLE DRIVE	SINGLE DRIVE	SINGLE DRIVE
OPTIONAL DRIVE	DUAL DRIVE (-D)	DUAL DRIVE (-D)	DUAL DRIVE (-D)
CYLINDER SIZE	4"	4"	4.5"



AVAILABLE CONFIGURATIONS:

- Clamshell bucket (-B)
- 3 x 4 contractor grapple (-C)
- Forestry grapple (-F)
- Rake (-R)



PIERCE

At Pierce, we approach all levels of our business with 'quality' at the forefront.

Our comprehensive sales/application analysis allows us to propose the most productive solution for your heavy equipment applications. Our engineers use sophisticated design methods and cutting edge software to assure optimum design and functionality for the life of your equipment. Our manufacturing standards always meet/exceed those from the excavator manufacturer, and our sales and service representatives, as well as our strategically located service parts warehouses, allow us to provide a level of support second to none.

So, it's no accident that our business philosophy transcends our product offering, allowing us to provide the highest quality attachments, work tools and machine conversions for all sizes of excavators. Our quality products, coupled with superior post sale support, assure Pierce to be a valued partner to you.

That's what "Pierce Built, Pierce Backed" is all about.

Come visit us at www.piercepacific.com where our complete line of Pierce products are on display.





PIERCE

In-house design team: check. Comprehensive manufacturing capabilities: check. Product testing and certification, technical support, and convenient distribution centers throughout North America: check, check, and check. With so much to offer, we're ideally positioned to provide complete solutions for all of your business needs. From ordinary to extraordinary.

As a leading designer and manufacturer of hydraulic excavator attachments and work tools, Pierce has built a solid reputation for providing reliable, high performance products that are designed to keep pace with changing industry conditions – and one step ahead of emerging technologies.

Our position as a direct supplier for many of the world's leading equipment providers has enabled us to become experts in client collaboration, managing specific application parameters, and maintaining the highest quality standards for a variety of markets. Even if your needs call for a customized solution that doesn't currently exist, you can count us to make it happen – and make it happen right. Imagine that.



Pierce Pacific Manufacturing, Inc.

4424 NE 158th
Portland, Oregon 97230 USA

Post Office Box 30509
Portland, Oregon 97294 USA

Telephone: 503.808.9110
Toll Free: 800.760.3270
Fax: 503.808.9111

Distribution Warehouse:
Jackson, Mississippi USA

www.piercepacific.com

