

WHY USE
TWO MACHINES,
WHEN ALL
YOU NEED IS
ONE.



INDUSTRY CHANGING... **AGAIN.**

NET WEIGHT	6,186 lb.	2,806 kg
PROCESSING RANGE	3 -28 in.	8-71 cm
MAX DELIMB OPENING	28 in.	711.2 mm
MAX ARM OPENING	53.5 in.	136 cm
MAX CUTTING DIAMETER	26 in.	66 cm
MAX HYDRAULIC PRESSURE	5,075 psi	35 MPa
RECOMMENDED CARRIER SIZE	24-39 MT	

GP
PRO SERIES

STRONG. FAST. ACCURATE.

Improvements in efficiency and profitability have always been paramount characteristics of the GP, and the GP ProSeries is no different.

Building on the GP's solid foundation, the GP ProSeries introduces innovative new features that improve reliability and productivity in several important ways. The GP ProSeries arrives with several significant upgrades. No other forestry tool makes a bigger impact on productivity than the GP ProSeries.

CENTRALIZED GREASING SYSTEM

- Measuring wheel cylinder
- Top saw
- Butt saw
- Center roller

SWIVEL

Higher hydraulic capacity with high-grade seals. Greater durability and extended lifespan with upgraded electrical.

ACCESS COVERS

Larger removable covers for easier serviceability.

TOP KNIFE

Increased delimbing coverage produces a cleaner log.

TOP SAW

Enhanced design with twin roller bearings.

ARMOR

Increased drive motor protection from limbs and incidental impacts.

SELF-CLEANING MEASURING WHEEL

Maintains consistent log engagement. Avoids clogging by shedding bark.

MEASURING WHEEL CYLINDER PIN

Maintains consistent log engagement. Avoids clogging by shedding bark.

DOGBONE LINK

Stronger cast material for extreme durability.

CONTROL VALVE

Flexible suspension mounts better secures control valve. High-grade manifold seals, combined with increased tie rod strength, results in leak-free operation.

BUMPER

Heavy-duty door, hinges and fixed bumper absorbs heel rack impacts.

BUTT SAW

Improved retention.

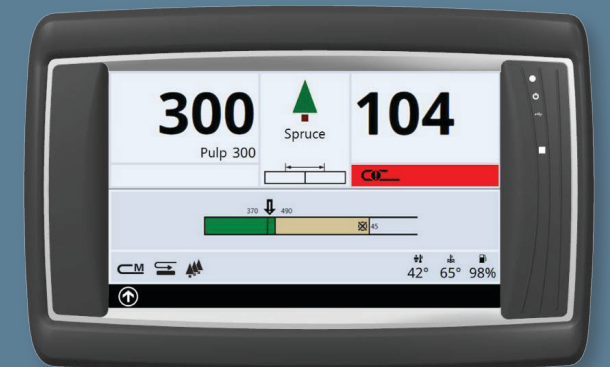
FIND-END LASER

Precision accuracy. Snow, burnt fiber and debris resistant.

SKID PLATES & BELLY ROLLER

Reduces friction and produces uniform, smooth feeding.

Forester



FORESTER CONTROL SYSTEM

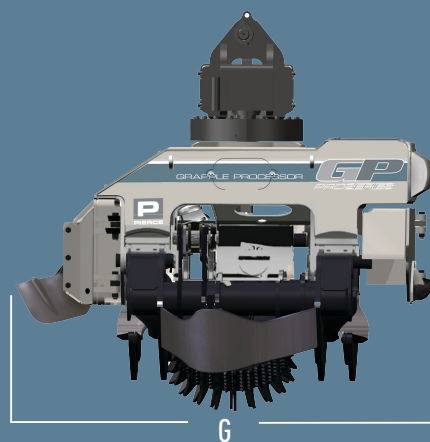
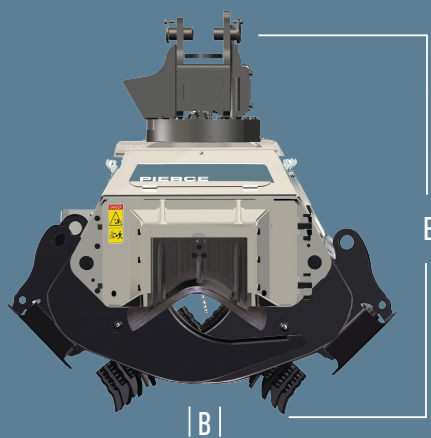
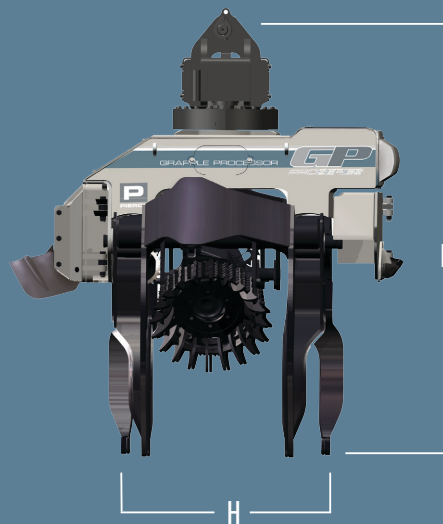
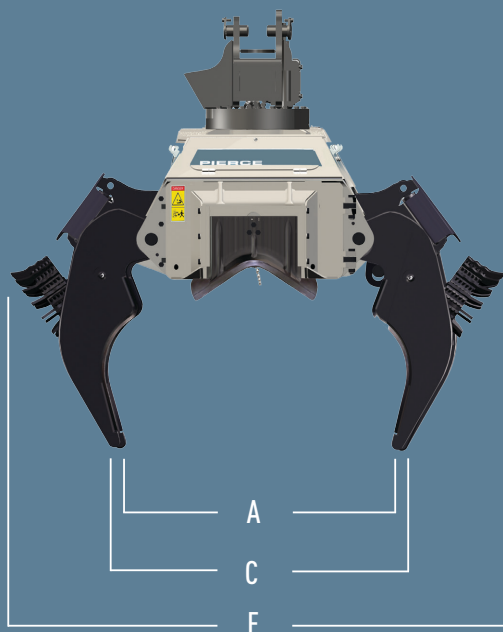
The GP ProSeries offers a completely new state-of-the-art control system with improved module and cable connections, wireless communication and features our latest full scale measuring technology from our Forester Control System. The complete bucking system handles measurement, control, monitoring and management of the production process, all controlled by a user-friendly, color touch screen interface.

2 CONFIGURATIONS AVAILABLE:

H50	9" color touch screen with standard production reporting.
H60	15" color touch screen with StanForD production reporting.



Wireless communication between GP ProSeries and cab.



The GP ProSeries represents the best of Pierce's pioneering spirit, innovative engineering and state-of-the-art technology.

SPECIFICATIONS

Weight	6,186#	2,806kg
Degrees Of Rotation	360° Continuous	
Control System	Forester	
Recommended Machine Size	24-39 MT	

DIMENSIONS

Arms: Open	A	53.5"	136cm
Arms: Closed	B	3"	8cm
Maximum Wheel Opening	C	60"	151cm
Height: Open	D	82"	209cm
Height: Closed	E	67.5"	172cm
Width: Open	F	93"	236cm
Length	G	74"	189cm
Arm To Arm Distance	H	45.5"	16cm
Top Saw Size		.404	
Top Saw Maximum Cutting Diameter	17"	43cm	
Butt Saw Size		3/4	
Butt Saw Maximum Cutting Diameter	26"	66cm	
Capacity (ft³): Tip To Tip		4.5ft³	
Processing Diameter	3"-28"	8-71cm	

GP
PROSERIES

P
PIERCE

WWW.PIERCEPACIFIC.COM TOLL FREE: 800.760.3270
PORTLAND, OREGON



Scan for all GP ProSeries features and more.