

INDUSTRIAL PRODUCTS CAB RISERS, GUARDS & CONVERSIONS



PIERCE

PIERCE

In-house design team: check. Sophisticated manufacturing capabilities: check. Product testing and certification, technical support, and convenient distribution centers throughout North America: check, check, and check. With so much to offer, we're ideally positioned to provide complete solutions for all of your business needs. From ordinary to extraordinary.

As a leading designer and manufacturer of hydraulic excavator attachments and work tools, Pierce has built a solid reputation for providing reliable, high performance products that are designed to keep pace with changing industry conditions — and one step ahead of emerging technologies.

Our position as a direct supplier for many of the world's leading equipment providers has enabled us to become experts in client collaboration, managing specific application parameters, and maintaining the highest quality standards for a variety of markets. Even if your needs call for a customized solution that doesn't currently exist, you can count us to make it happen — and make it happen right. Imagine that.



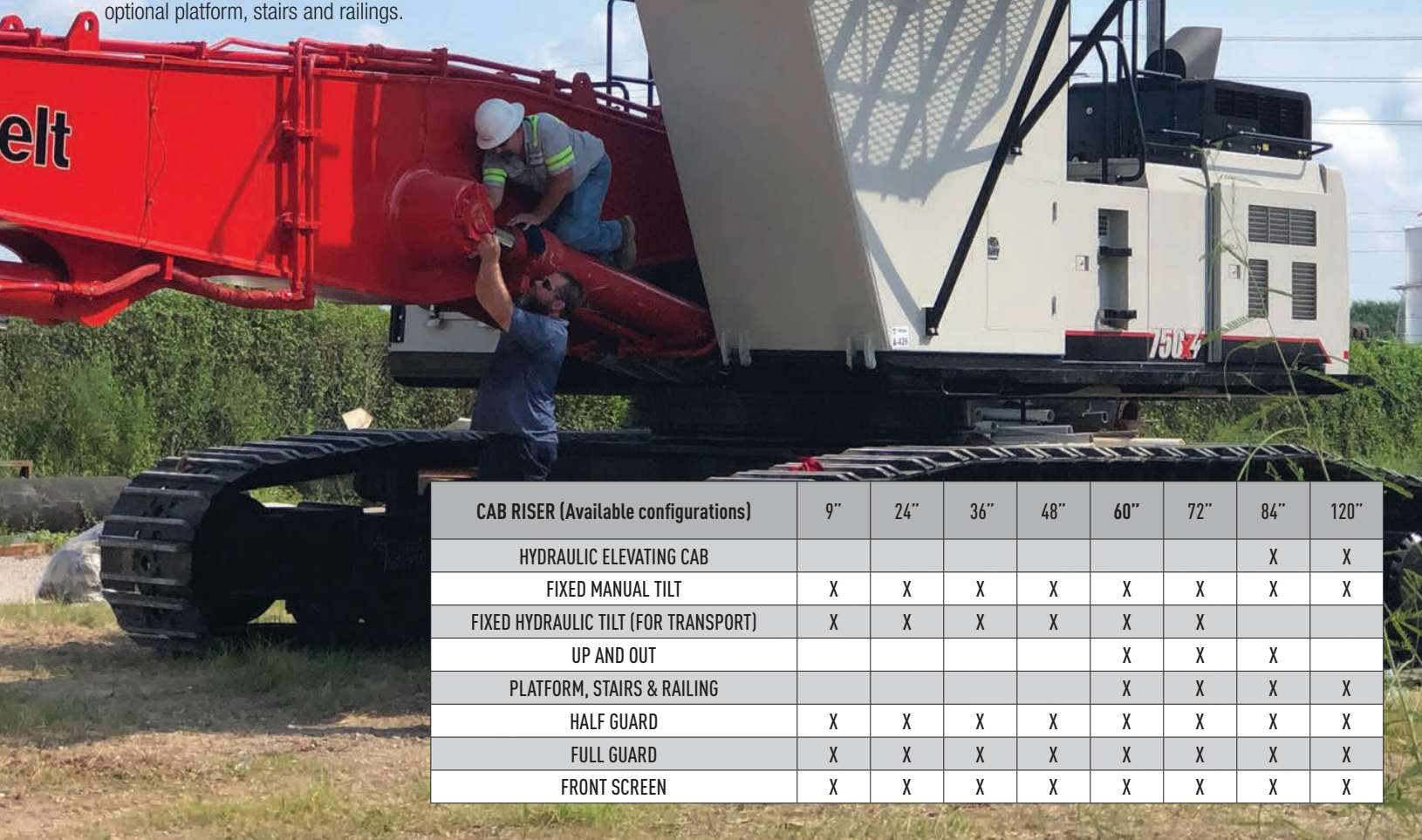
RISE TO ANY OCCASION.

Whether you're looking for manual or hydraulic functionality, customized cab guard, various riser heights, or a configuration to meet a specific eye level or sight line, our experienced team is at your service. From fixed risers and hydraulic elevating cabs to operator cab guards that enhance safety, we're ready to provide whatever your job demands.

Our 48" and taller risers are suited to enclose Pierce generator packages for magnet operation.

For additional access and egress safety, select our optional platform, stairs and railings.

CAB RISERS



CAB RISER (Available configurations)	9"	24"	36"	48"	60"	72"	84"	120"
HYDRAULIC ELEVATING CAB							X	X
FIXED MANUAL TILT	X	X	X	X	X	X	X	X
FIXED HYDRAULIC TILT (FOR TRANSPORT)	X	X	X	X	X	X		
UP AND OUT					X	X	X	
PLATFORM, STAIRS & RAILING					X	X	X	X
HALF GUARD	X	X	X	X	X	X	X	X
FULL GUARD	X	X	X	X	X	X	X	X
FRONT SCREEN	X	X	X	X	X	X	X	X



60" FIXED



60" UP-AND-OUT FIXED



120" FIXED



48" FIXED

CAB RISERS



HYDRAULIC ELEVATING CAB

Reach new heights of productivity with our 7' hydraulic elevating cab riser.

FEATURES:

- Elevate (0'-7').
- Operated by dedicated switch from inside cab.
- Hydraulic system cushions to avoid abrupt stops.
- Manual emergency cab-lowering controls mounted in cab and service bay (in the event of a power loss).
- Full cab guard.

ALSO AVAILABLE:

- Elevate (10')
- Elevate (0'-7') and tilt (35°).
- Tilt Only: 35°.

CAB GUARD

Protect your cab and operator from heavy impact.

OPTIONAL:

- Hinged front screen protects windshield and operator from flying debris.
- High intensity LED work lights.



CAB GUARD WITH
FRONT SCREEN



CAB GUARD



ELEVATE



TILT



ELEVATE AND TILT





BACKPACK



TOPMOUNT



SANDWICH



UNDERMOUNT

COUNTERWEIGHT

Our heavy counterweights provide exceptional stability, particularly when working over the side of the machine. Purpose-built to also reduce loading on the swing bearing, this option is ideal for the rigors of heavy long reach, demolition, scrap, and material handling applications.

Available configurations:

- Top mount
- Undermount
- Top & undermount
- Sandwich
- Backpack

Pierce collaborates closely with the excavator OEM in order to provide the appropriate and approved counterweight amount for each machine.

WIDENED UNDERCARRIAGE

Pierce's widened carbody provides the over-the-side stability you need to handle heavy loads. It's engineered to stabilize your excavator while equalizing lift capacity throughout the entire 360° swing motion.

FIXED UNDERCARRIAGE



VARIABLE GAUGE UNDERCARRIAGE



TURNTABLE LEVELER

The unique design of Pierce's turntable levelers offer 8.5° articulation in both directions (left/right) for optimum flexibility on side slopes. Available for machines ranging from 17-23 metric tons.

OPTIONAL:

- Foot pedal or joystick control.

RISER RING

- Available: 1'-4'.
- Additional working height for high-sided barges.
- Improved operator sightlines.





Pierce Pacific Manufacturing, Inc.

4424 NE 158th
Portland, Oregon 97230 USA

Post Office Box 30509
Portland, Oregon 97294 USA

Telephone: 503.808.9110
Toll Free: 800.760.3270
Fax: 503.808.9111

Distribution Warehouse:
Jackson, Mississippi USA

www.piercepacific.com



Scan for all Pierce products
and more.

040122