



PIERCE

**PIERCE STEEP SLOPE**



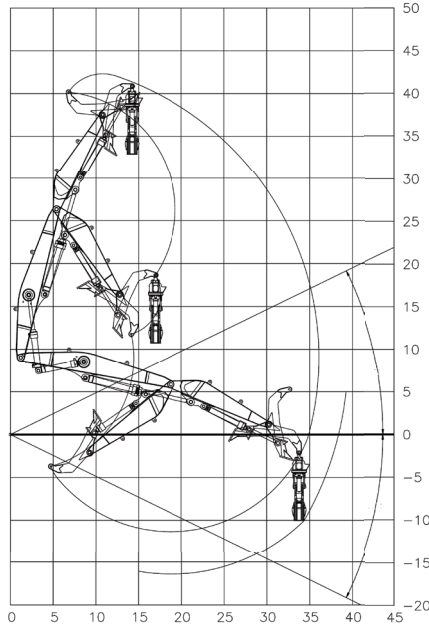
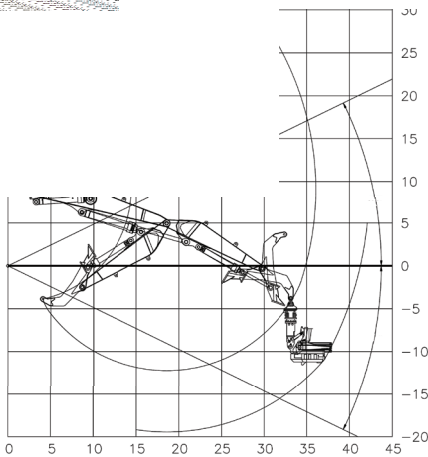
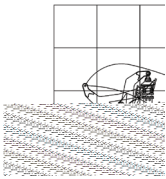
**PIERCE**



**FORESTRY INNOVATION**

# PIERCE STEEP SLOPE

## STEEP SLOPE: LIVE HEEL



### LIVE HEEL FELLING or SHOVEL LOGGING BOOM:

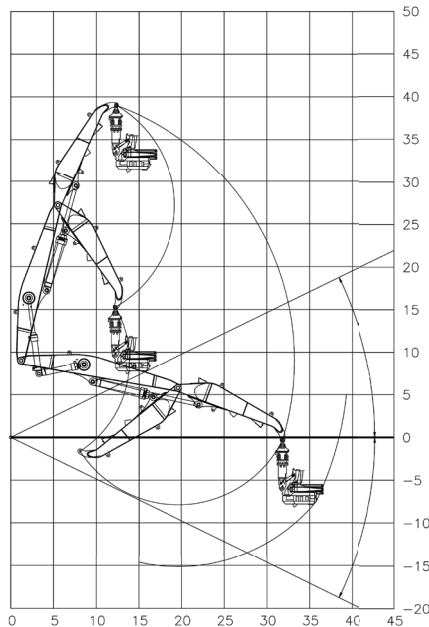
#### Includes:

- 36' overall reach
- Undermount live heel boom configuration
- Plumbed for felling head or Pierce forestry grapple
- Through-the-nose or traditional grapple plumbing
- Internal main boom and stick plumbing
- 4 Pierce cylinders (2 hoists, 1 stick, 1 heel)
- Stick cylinder guard
- Light guards (2) on stick
- Centralized lubrication
- Parflanged hydraulic plumbing
- Anti-drift valve
- Includes auxiliary plumbing for directional felling head

#### OPTIONAL:

- Hoist cylinder guard
- 2 LED lights installed on stick
- Pierce TC Forestry Grapple
- Quick change option between felling head & forestry grapple
- Deduct for OEM cylinders

## STEEP SLOPE: DIRECTIONAL FELLING



### DIRECTIONAL FELLING BOOM:

#### Includes:

- 33' overall reach
- 2-piece boom configuration
- Droop nose
- Plumbed for felling head
- Internal main boom and stick plumbing
- 3 cylinders (2 hoist, 1 stick)
- Stick cylinder guard
- Light guard underneath stick
- Centralized lubrication
- Parflanged hydraulic plumbing
- Anti-drift valve
- Includes auxiliary plumbing for directional felling head

#### OPTIONAL:

- Hoist cylinder guard
- 2 LED lights installed on stick
- Deduct for OEM cylinders

# GP

## PIERCE GRAPPLE PROCESSOR

### 100% GRAPPLE. 100% PROCESSOR.

What if you could combine the versatility of a grapple and the functionality of a processor into one amazing purpose-built work tool? The GP hangs like a grapple with 360° continuous rotation, 53.5" arm opening and full measuring and processing capabilities.

That's the revolutionary Pierce Grapple Processor – the perfect single tool for your steep slope operation.

	GRAPPLE	PROCESSOR
WEIGHT	6,186#/2,806kg	
DEGREES OF ROTATION	360° CONTINUOUS	
ARMS OPEN	53.5"/136cm	
ARMS CLOSED	3"/8cm	
MAXIMUM WHEEL OPENING	60"/151cm	
HEIGHT (TO LINK PIN): OPEN	82"/209cm	
HEIGHT (TO LINK PIN): CLOSED	67.5"/172cm	
WIDTH: ALL OPEN	93"/236cm	
LENGTH	74"/189cm	
ARM TO ARM DISTANCE	45.5"/116cm	
RECOMMENDED MACHINE SIZE	22-37 MT	
TOP SAW		.404
TOP SAW MAXIMUM CUTTING DIAMETER		17"/43cm
BUTT SAW		3/4"
BUTT SAW MAXIMUM CUTTING DIAMETER		26"/66cm
EFFECTIVE PROCESSING DIAMETER		3"-28"/8-71cm
CAPACITY (FT <sup>2</sup> ): TIP TO TIP	4.5FT <sup>2</sup>	
FULL SCALE MEASURING	YES	

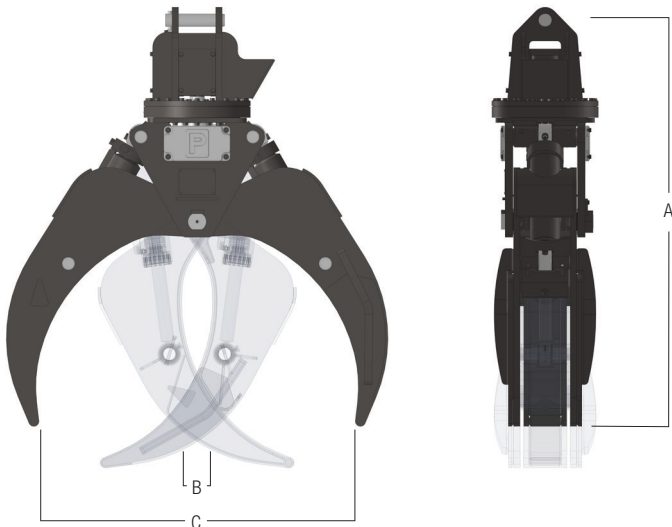
Features and technical data may vary without notice.



## PIERCE FORESTRY GRAPPLES

### LOG ON!

Pierce forestry grapples feature powerful 360° continuous rotation and are multi-purposed for excellent versatility. They feature an optimum arm shape for big wood, tight grapple closure for superior small log control, load check valves to eliminate the risk of dropping your payload, and heavy-duty legs that possess the optimum shape for shovel logging, loading, unloading and sorting.



GRAPPLE MODEL	TC46	TC52	TC58	TC60	TC63	TC66	TC68
OVERALL HEIGHT OPEN (A)	71"	72"	76"	78"	77"	80"	83"
MINIMUM OPENING (B)	4"	4.5"	7"	7"	6.5"	8.5"	7.5"
MAXIMUM OPENING (C)	46"	53"	58"	61"	63"	66"	67"
ARM CYLINDER SIZE	3.5"	4"	4"	4"	4"	4"	4"
CONTINUOUS ROTATION	360°	360°	360°	360°	360°	360°	360°
WEIGHT	1,200#	2,200#	2,550#	2,550#	2,500#	2,800#	2,800#



## PIERCE YARDING SYSTEMS

### PIERCE YARDING PACKAGES: QUALITY WITHOUT COMPROMISE.

Pierce yarding packages are built to work with loaders and excavators, without compromising the primary functionality and performance of your machine. More economical than a traditional dedicated yarder, our yarding packages offer you more flexibility for less investment. They're ideal as your steep slope cabled machine...everything from shotgun (uphill) and highlead (downhill) log retrieval in large second growth timber, to thinning applications and picking corners. And with a smaller machine profile than most dedicated yarders, Pierce yarding packages make it easy for you to avoid excessive transportation costs, while saving on fuel and maintenance.



4424 NE 158th  
Portland, Oregon 97230 USA

Post Office Box 30509  
Portland, Oregon 97294 USA

Telephone: 503.808.9110  
Toll Free: 800.760.3270  
Fax: 503.808.9111

Distribution Warehouses  
Edmonton, Alberta Canada  
Jackson, Mississippi USA

[www.piercepacific.com](http://www.piercepacific.com)

