



PIERCE

GP™

PIERCE GRAPPLE PROCESSOR



PIERCE



FORESTRY INNOVATION

What if you could combine the versatility of a grapple and the functionality of a processor into one amazing purpose-built work tool. The GP hangs like a grapple with 360° continuous rotation, 53.5" arm opening and full measuring and processing capabilities.

That's the revolutionary Pierce Grapple Processor.

100% GRAPPLE. 100% PROCESSOR.



With the cost of equipment increasing and the value of logs remaining static, you need a more economical way to log. One that allows you to combine your processor and loader into one machine, reducing the amount of equipment you need. The Grapple Processor does all that and more. Like saving you time, labor, maintenance, fuel and transportation costs by combining the equipment that has historically required two machines.

Whether your logging operation is large or small, the Pierce GP is the smartest way out there to do more with less.

LOG HANDLING

Feed wheels allow you reposition long logs without releasing or rehandling.

Long logs won't crisscross while handling multiple stems.

And an innovative arm opening makes handling bundles of short wood a breeze.

THINNING

Process your logs while leaving the limbs in the brush. The GP allows you to bring your fully merchandised logs to the landing, ready to be loaded out, without requiring processing at the landing.

SHOVEL LOGGING/HOE CHUCKING

Need to shovel log? The feed wheels allow you to shovel logs farther on each turn. Instead of 10 turns to the landing, now you can do it in as little as 8!

The GP's four grapple tines also makes easy work of brush piling and distribution too.

YARDING

Yarding production levels and limited landing sizes present the perfect opportunity to utilize only one machine to do all your processing and loading...with only a Pierce GP.

THE GP REPRESENTS
THE BEST OF PIERCE'S PIONEERING SPIRIT,
INNOVATIVE ENGINEERING AND
STATE-OF-THE-ART TECHNOLOGY.

PURPOSE-BUILT GRAPPLE.
PURPOSE-BUILT PROCESSOR.



LOADING

The 360° continuous rotation, feed wheels and unique, 2 tine arms with 53.5" opening reduces loading time significantly.

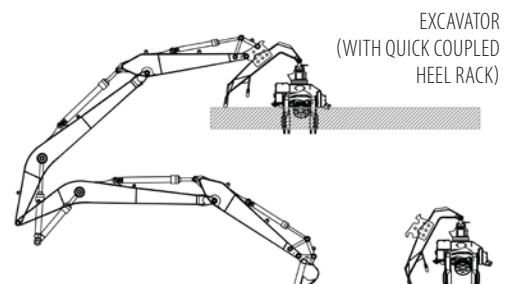
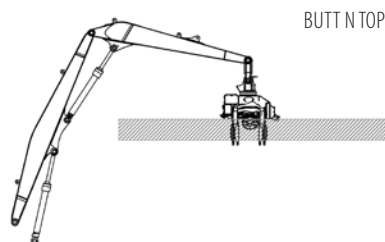
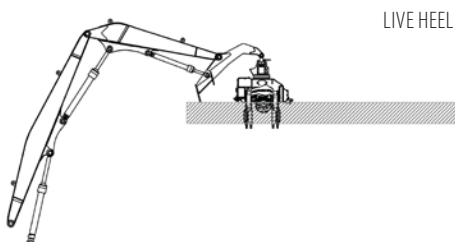
For the best of both worlds, combine your loading and processing into one effective machine!

PROCESSING

For high output production, use the GP as your primary landing processor. For even greater production, use the GP as a supplemental processor to your existing delimeter/processing head.



CONFIGURATIONS:





**SORTS, SHOVELS AND LOADS
LIKE A GRAPPLE.
DELIMBS, MEASURES AND CUTS
LIKE A PROCESSOR.**

THE WAY IT IS ENGINEERED.



STRUCTURE

Designed for the rigors of North American forestry and climate conditions. Superior accessibility allows for fast/easy servicing of the hydraulic, electrical and saw systems.

DELIMBING

Dual delimb arms with replaceable weld-on knives.
1 cast floating top knife.
1 fixed reverse knife.

FEED WHEELS

The surface of the steel feed wheels allows for maximized traction and optimum stem support – benefits in large diameter and irregular logs, as well as multi-stemming smaller diameters. Optional: rubber/chain feed wheels.

DRIVE MOTORS

High torque drive motors allow for powerful delimiting, especially in the most challenging applications, achieving to top speed in half the time of other processing heads.

- For larger, high power machines, take advantage of the standard 934cc drive motors for extreme delimiting torque.
- For smaller 20-24 MT machines, opt for the 857cc drive motors to optimize speed and torque.

ARMS

Opening = 53.5"

Grapple arm contour is similar to our TC52 forestry grapples – ideal for picking individual stems, as well as multiple logs without crisscrossing, making the GP suitable for ideal log handling and loading. Grapple tips allow for efficiently digging into log decks. Integral feed wheels are positioned between the grapple arms.

ARM POSITION CONTROL SYSTEM

By continuously monitoring the position of the feed wheels, the arms are constantly optimizing their relative position. This allows the arms to hug the entire length of the stem, resulting in a cleaner finished log. Utilize PRE-DELIMB on the limby stems. While feeding, this function kicks the delimb arms a moderate distance from the log's surface. This is designed to initially clean a limby stem prior to final processing.

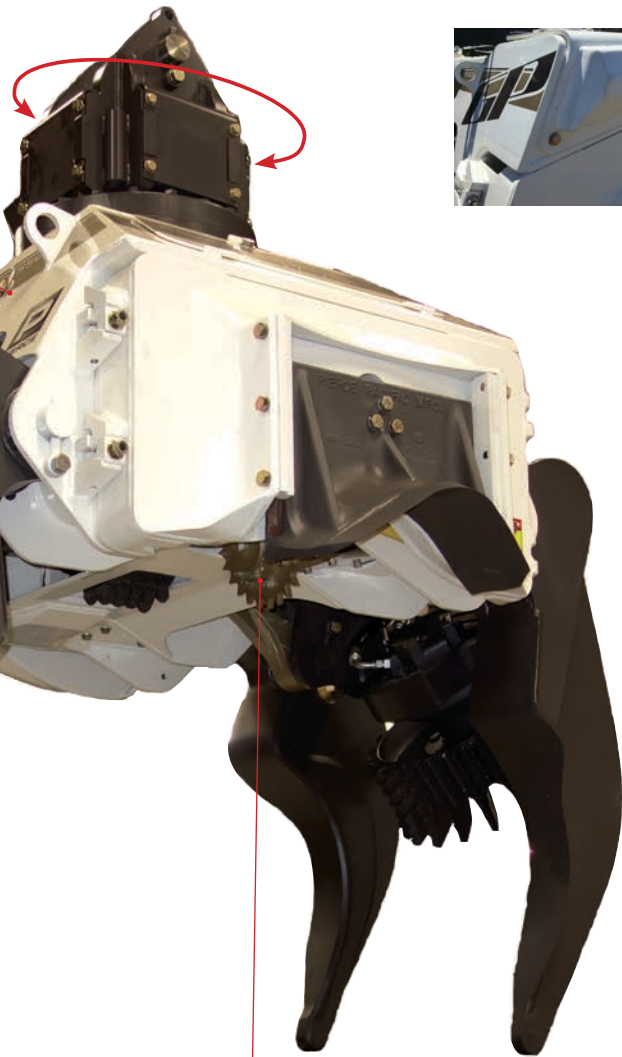




PIERCE GRAPPLE PROCESSOR

ROTATOR

360° continuous rotation with high torque Pierce rotator.



MEASURING WHEEL
Large diameter provides precision measurement.



BUMPER

Secure the GP to the heel rack for 'in the brush' maneuverability, as well as for simple transport.



SAW SYSTEMS

TOP SAW: .404

BUTT SAW: ¾"

Swing-away saw locations provide easy access to saw components.



FILTER SYSTEM

High pressure filter, coupled with return and case drain filters, provide maximum contaminant protection in both directions, protecting the GP as well as the machine.

INCLUDED WITH EVERY GP

Standard Uptime Kit



OPTIONS

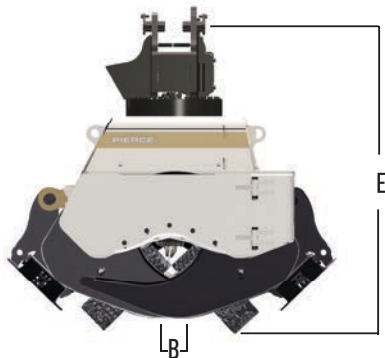
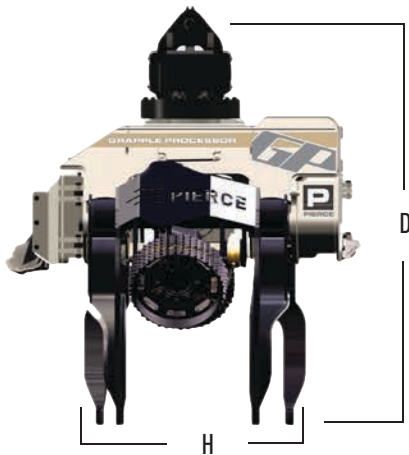
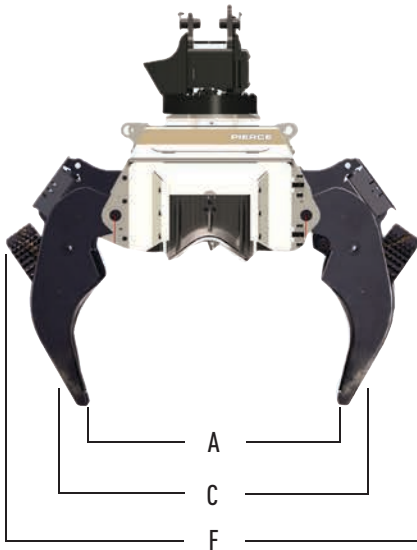
Rubber/chain feed wheels

Deluxe dealer parts kit

**DO TWICE THE WORK
IN HALF THE TIME.**

GP

PIERCE GRAPPLE PROCESSOR



		GRAPPLE	PROCESSOR
WEIGHT		6,186#/2,806kg	
DEGREES OF ROTATION		360° CONTINUOUS	
ARMS OPEN	A	53.5"/136cm	
ARMS CLOSED	B	3"/8cm	
MAXIMUM WHEEL OPENING	C	60"/151cm	
HEIGHT (TO LINK PIN): OPEN	D	82"/209cm	
HEIGHT (TO LINK PIN): CLOSED	E	67.5"/172cm	
WIDTH: ALL OPEN	F	93"/236cm	
LENGTH	G	74"/189cm	
ARM TO ARM DISTANCE	H	45.5"/116cm	
RECOMMENDED MACHINE SIZE		22-37 MT	
TOP SAW		.404	
TOP SAW MAXIMUM CUTTING DIAMETER		17"/43cm	
BUTT SAW		3/4"	
BUTT SAW MAXIMUM CUTTING DIAMETER		26"/66cm	
EFFECTIVE PROCESSING DIAMETER		3"-28"/8-71cm	
CAPACITY (FT ²): TIP TO TIP		4.5FT ²	
FULL SCALE MEASURING		YES	

Features and technical data may vary without notice.



PIERCE GRAPPLE PROCESSOR



4424 NE 158th
Portland, Oregon 97230 USA

Post Office Box 30509
Portland, Oregon 97294 USA

Telephone: 503.808.9110
Toll Free: 800.760.3270
Fax: 503.808.9111

Distribution Warehouses
Edmonton, Alberta Canada
Jackson, Mississippi USA

www.piercepacific.com

