



BAR SAW



PIERCE BAR SAWS: TOUGH ENOUGH TO CUT IT. ALL OF IT.

You asked for it, you've got it! A heavy-duty bar saw built to cut big timber and made to last with greater strength, stronger durability, and larger cutting capacity. A heavy-duty frame consisting of a strong, simple structure eliminates the need for reconditioning. And forget about needing structural reinforcements prior to your first cut. This saw is ready for work right out of the box.

PBS 3440 BAR SAW.

The PBS 3440 is stronger, safer, and more productive than competitive disk-style saws. Instead of cutting before grabbing the stem, the PBS 3440 grabs the tree first, then cuts—a significant safety advantage on steep slopes. And, ours is the only saw on the market capable of a 36" (single-pass) cutting capacity. This means no more wasted time double cutting. Also, cutting a straight, square butt eliminates extra steps with the processor, saving your operation valuable time while maximizing production. Reverse cutting and no recovery time, as well as minimal maintenance, less demand for handfallers, and less fuel consumption makes the PBS 3440 a cut above anything out there.



3 HEAVY-DUTY CAST ARMS



BOOM ADAPTER



TREE SUPPORT TOWER

PIERCE BAR SAW



GENERAL:

- “Grab-then-cut” sequence offers greater safety with superior stem control, particularly on steep slopes.
- Greater production & faster cutting than intermittent-style saws.
- Designed to cut big timber, and made to last.
- Less demand for handfallers.
- Less deterioration on feller buncher equals reduced operational costs & fuel consumption.

FRAME:

- Heavy-duty frame eliminates need for reconditioning.
- No need for structural reinforcements.
- Stem tower assures superior log control and reduces excessive loading on arms.
- Lower tree shelf minimizes slippage by securing butt of the tree.

SAW SYSTEM:

- Spring suspension mount saw system.
- Full speed, powered saw return.
- Cut straight, square butt eliminating extra step with processor.
- No saw recovery time needed.
- Bolt-on oil tank with 7cc oil pump.

ARMS:

- Heavy-duty cast arms offer superior strength in big wood-felling applications.
- (3) 4" independent arm cylinders offer maximum tree control.

PINS & BUSHINGS:

- Oversized, induction-hardened, heat treated, and chromed pins.
- Aluminum bronze bushings for extended lubrication/greasing intervals.

HYDRAULIC SYSTEM:

- Centralized hydraulics are fully enclosed for maximum operational protection.

ROTATION:

- Standard tilt: 40°
- Optional tilt: 350°

EXCLUSIVELY

PIERCE

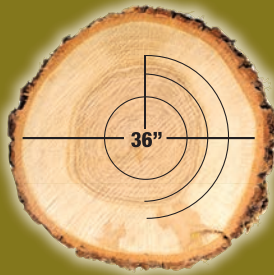
PIERCE BAR SAW



EXCLUSIVELY
PIERCE

WHY A PIERCE BAR SAW?

- Strong, durable saw that is not “disposable” after a short life span.
- Strong, simple structure—not a pasted together weldment.
- Primarily suited for the applications of the Pacific Northwest and Western Canada.
- Does not require frequent reconditioning after each season.
- Does not require structural reinforcements before it cuts a single tree.



SPECIFICATIONS	PBS 3440
CUTTING CAPACITY	36"
ARM OPENING	39.5"
LATERAL TILT: Standard	40° (20°L, 20°R)
LATERAL TILT: Optional	350°
HEIGHT	99"
WIDTH	66"
OVERALL WEIGHT <small>INCLUDES BOOM ADAPTER & 40° LATERAL TILT</small>	4,780 LB.
SAW OIL TANK	3.5 GALLON
CARRIER REQUIREMENTS	
HYDRAULIC REQUIREMENTS	3,600-5,000PSI
FLOW	50-75 GPM
CARRIER WEIGHT	60,000LB-82,000LB.

Features and technical data may vary without notice.

FEATURES	PIERCE BAR SAW PBS 3440	COMPETITIVE HOT SAW	COMPETITIVE INTERMITTENT SAW
SINGLE PASS CUTTING CAPACITY	36"	20" - 28"	24" - 29"
WEIGHT	4,780 LB.	6,000-7,000 LB.	6,200-6,600 LB.
FIRE RISK	LOW	HIGH	MEDIUM
OPERATIONAL COSTS	\$	\$	\$
RELATIVE PRICE	\$	\$\$	\$\$\$

NOTE: Specifications reflect saws equipped with 40° lateral tilt.



Pierce Pacific Manufacturing, Inc.

4424 NE 158th
Portland, Oregon 97230 USA

Post Office Box 30509
Portland, Oregon 97294 USA

Telephone: 503.808.9110
Toll Free: 800.760.3270
Fax: 503.808.9111

Distribution Warehouses
Edmonton, Alberta Canada
Jackson, Mississippi USA

www.piercepacific.com